



**NOAA**

**OFFICE OF SATELLITE  
AND PRODUCT OPERATIONS**

NATIONAL ENVIRONMENTAL SATELLITE, DATA, AND INFORMATION SERVICE

# **Meteosat-8 Indian Ocean Data Coverage (IODC)**

**Chris Sisko**

**NESDIS/OSPO**

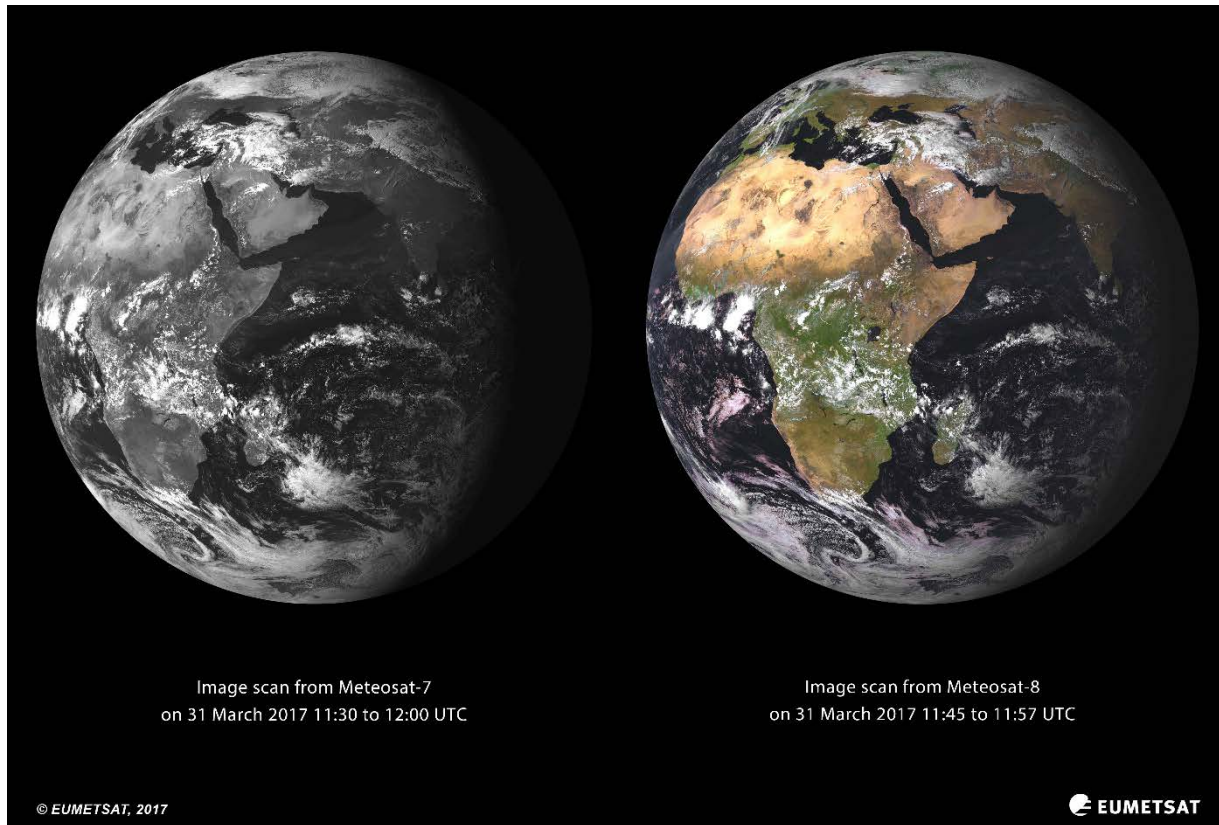
Telephone: 301-817-4783

Email: [Chris.A.Sisko@noaa.gov](mailto:Chris.A.Sisko@noaa.gov)



## Outline

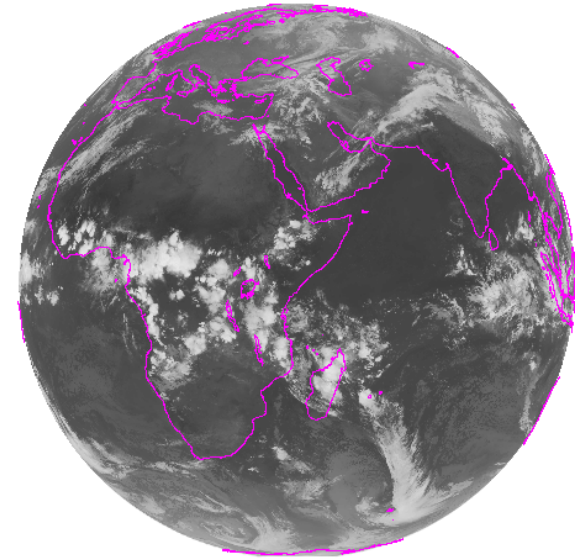
- Current Met-8 IODC status
- Data acquisition/processing strategy
- Future IODC





## Met-8 IODC Status

- Met-8 (MSG-1) took over as the primary IODC service as of Feb 1, 2017
- Met-8 IODC service period:  
Feb 1, 2017 – Jun 2020\* (TBC)
- Met-7 Status
  - Data dissemination ended on March 31, 2017 at 0900 UTC
  - Re-orbiting / Decommission of Met-7 occurred on April 6, 2017



\*Life is based on fuel limitations projections and these are periodically reviewed/updated.



## Met-8 IODC Data Acquisition & Processing

- EUMETCast-Europe/Africa direct broadcast
  - these data are encrypted
- NOAA receives these data from:
  - **EUMETCast terrestrial-based multicast service (EUM → STAR)**
  - **Secure terrestrial point-to-point protocols (EUM MMDS → PDA)**
  - **WMO GTS circuits (EUM → GTS → WSH RTH)**

**8x5 best effort**

**24x7 supported**



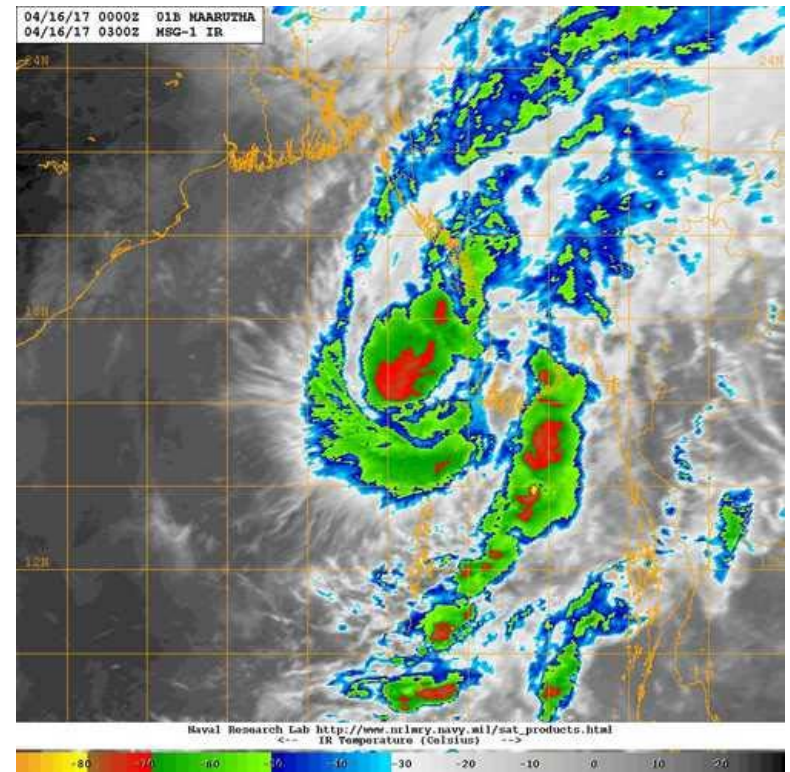
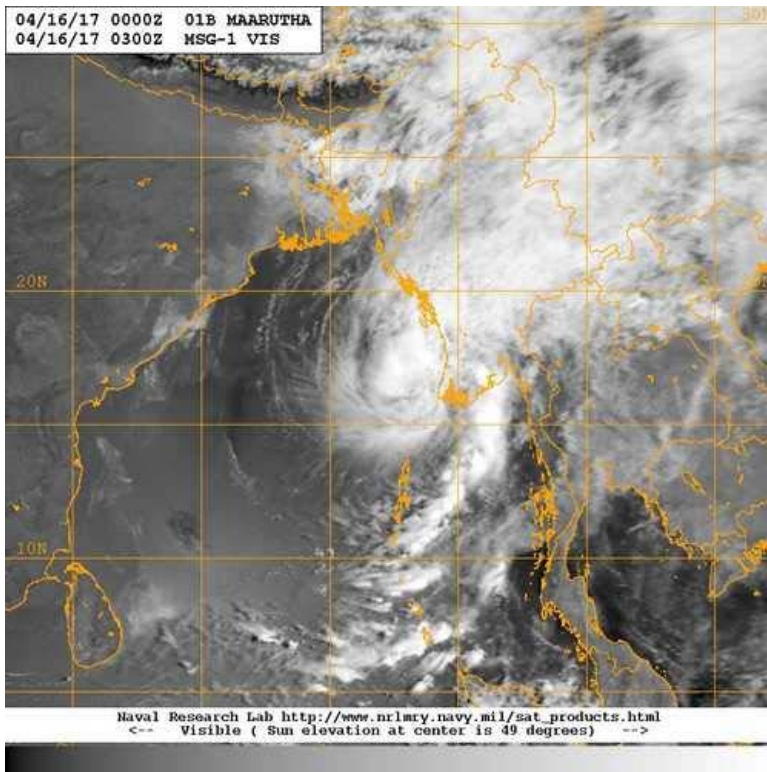


# NOAA

## OFFICE OF SATELLITE AND PRODUCT OPERATIONS

NATIONAL ENVIRONMENTAL SATELLITE, DATA, AND INFORMATION SERVICE

### Examples – Cyclone Maarutha (IO Basin)





# NOAA

OFFICE OF SATELLITE  
AND PRODUCT OPERATIONS

NATIONAL ENVIRONMENTAL SATELLITE, DATA, AND INFORMATION SERVICE

## Future IODC Coverage

- Discussion on future IODC coverage after Met-8



# NOAA

OFFICE OF SATELLITE  
AND PRODUCT OPERATIONS

NATIONAL ENVIRONMENTAL SATELLITE, DATA, AND INFORMATION SERVICE

# *Discussion*



# NOAA

OFFICE OF SATELLITE  
AND PRODUCT OPERATIONS

NATIONAL ENVIRONMENTAL SATELLITE, DATA, AND INFORMATION SERVICE

# Backup



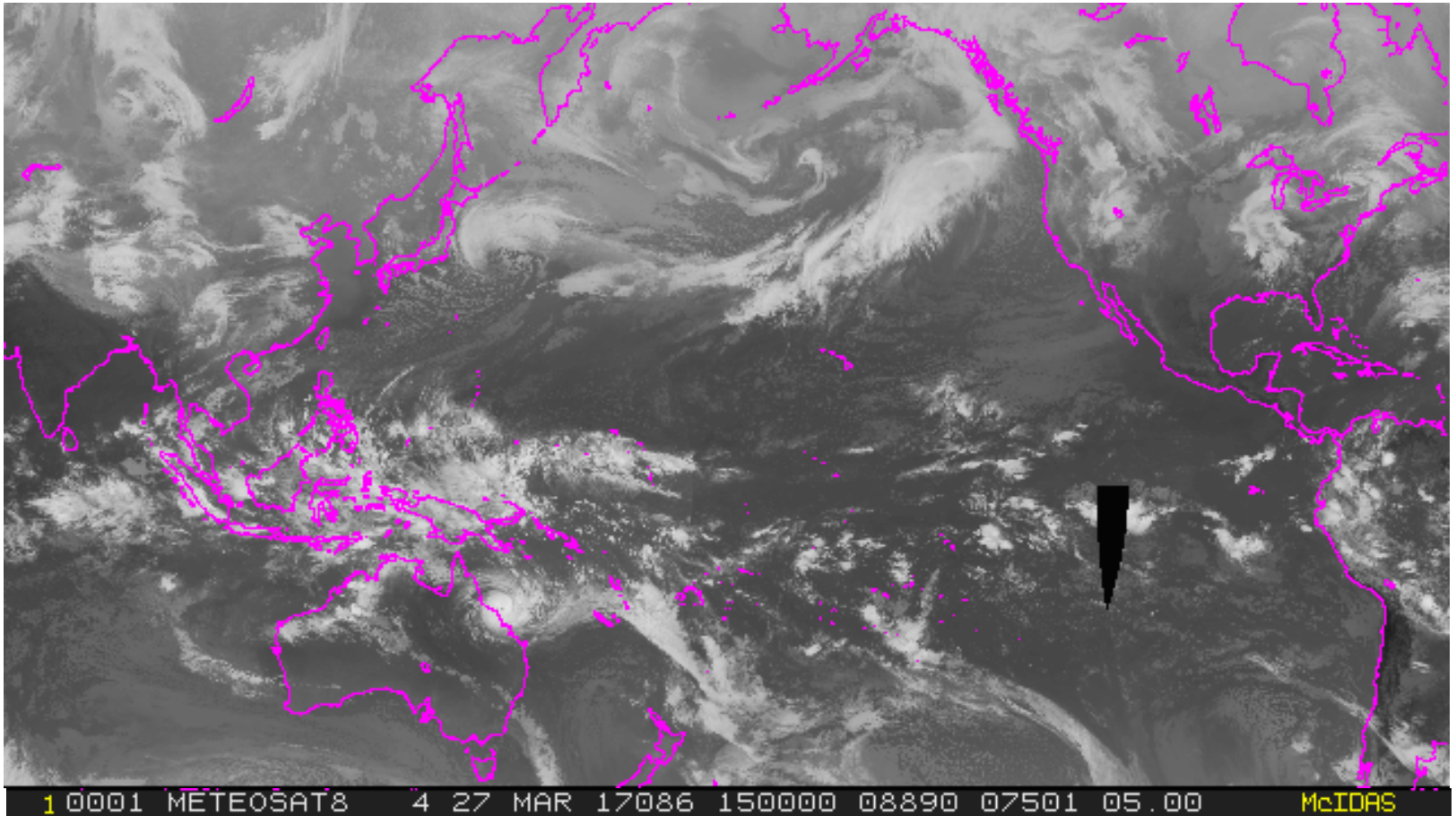


# NOAA

## OFFICE OF SATELLITE AND PRODUCT OPERATIONS

NATIONAL ENVIRONMENTAL SATELLITE, DATA, AND INFORMATION SERVICE

# Met-8 Imagery on McIDAS



Meteosat Band-9 (10.8 um)

Global Mosaic for IR 8KM

---

COPC (May 2<sup>nd</sup> – 3<sup>rd</sup>, 2017)  
 Chris Sisko (chris.a.sisko@noaa.gov)

---



# Met-8 Catalog in PDA

**ESPDS USER PORTAL**

Account ▾ Subscription ▾ Search ▾ Ad-Hoc ▾ Catalog ▾ Broadcast ▾ System ▾

**Manage Products**

[Create New](#) [Edit](#) [Delete](#)

<input type="checkbox"/>	Name	Producer	Satellite(s)	Data Type	Directory	Format	Periodicity	Coverage	Active	Acquisition ...
<input type="checkbox"/>	CLAI	EUMETSAT	MET8	Atmosphere	in/iodc	HRIT	10800	NONE	true	Thu Dec 01 0...
<input type="checkbox"/>	CLM	EUMETSAT	MET8	Atmosphere	in/iodc	HRIT	900	NONE	true	Thu Dec 01 0...
<input type="checkbox"/>	CRM	EUMETSAT	MET8	Atmosphere	in/iodc	HRIT	86400	NONE	true	Thu Dec 01 0...
<input type="checkbox"/>	CSR	EUMETSAT	MET8	Atmosphere	in/iodc	HRIT	3600	NONE	true	Thu Dec 01 0...
<input type="checkbox"/>	CTH	EUMETSAT	MET8	Atmosphere	in/iodc	HRIT	900	NONE	true	Thu Dec 01 0...
<input type="checkbox"/>	DIV	EUMETSAT	MET8	Atmosphere	in/iodc	HRIT	3600	NONE	true	Fri Dec 16 00...
<input type="checkbox"/>	FIR	EUMETSAT	MET8	LAND	in/iodc	HRIT	900	NONE	true	Thu Dec 15 0...
<input type="checkbox"/>	GII	EUMETSAT	MET8	NONE	in/iodc	HRIT	900	NONE	true	Fri Dec 16 00...
<input type="checkbox"/>	MPE	EUMETSAT	MET8	NONE	in/iodc	HRIT	900	NONE	true	Thu Dec 01 0...
<input type="checkbox"/>	MSG_IODC_EPI	EUMETSAT	MET8	NONE	in/iodc	HRIT	3600	NONE	true	Thu Dec 01 0...
<input type="checkbox"/>	MSG_IODC_HRV	EUMETSAT	MET8	Atmosphere	in/iodc	HRIT	3600	NONE	true	Thu Dec 01 0...
<input type="checkbox"/>	MSG_IODC_IR-087	EUMETSAT	MET8	Cloud Cover	in/iodc	HRIT	3600	NONE	true	Thu Dec 01 0...
<input type="checkbox"/>	MSG_IODC_IR_016	EUMETSAT	MET8	Cloud Cover	in/iodc	HRIT	3600	NONE	true	Wed Jan 11 ...
<input type="checkbox"/>	MSG_IODC_IR_039	EUMETSAT	MET8	Cloud Cover	in/iodc	HRIT	3600	NONE	true	Thu Dec 01 0...
<input type="checkbox"/>	MSG_IODC_IR_097	EUMETSAT	MET8	CRYOSPHERE	in/iodc	HRIT	3600	NONE	true	Thu Dec 01 0...
<input type="checkbox"/>	MSG_IODC_IR_108	EUMETSAT	MET8	Cloud Cover	in/iodc	HRIT	3600	NONE	true	Wed Jan 11 ...
<input type="checkbox"/>	MSG_IODC_IR_120	EUMETSAT	MET8	Atmosphere	in/iodc	HRIT	3600	NONE	true	Thu Dec 01 0...

Page 1 of 2    Displaying 1 - 20 of 30

[Generate Product Images](#)



# NOAA

OFFICE OF SATELLITE  
AND PRODUCT OPERATIONS

NATIONAL ENVIRONMENTAL SATELLITE, DATA, AND INFORMATION SERVICE

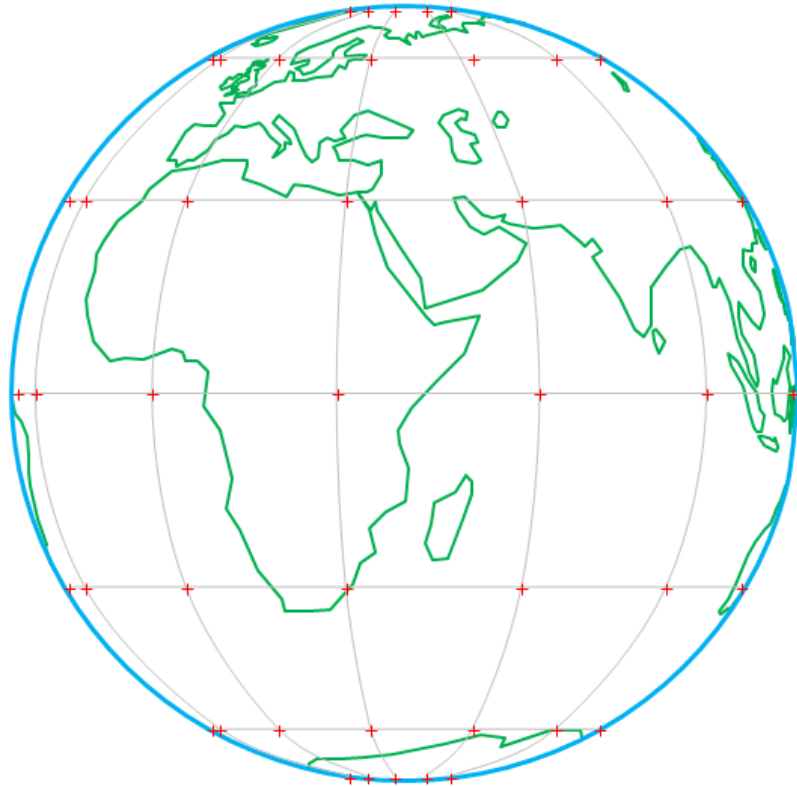
## Met-8 IODC Data Distribution

- Met-8 data is available for distribution from PDA
- PDA Distribution Policy for Met-8 data
  - NOAA is permitted to deliver a maximum frequency of three-hourly MSG FD data to *all* users without restriction within the US Territory. As a NOAA affiliate/US Government Agency, **DoD has permitted access to the full 15 minute MSG FD imagery**. Non U.S. government agencies or non affiliates requires a licensing agreement with EUMETSAT for full 15 minute FD access.



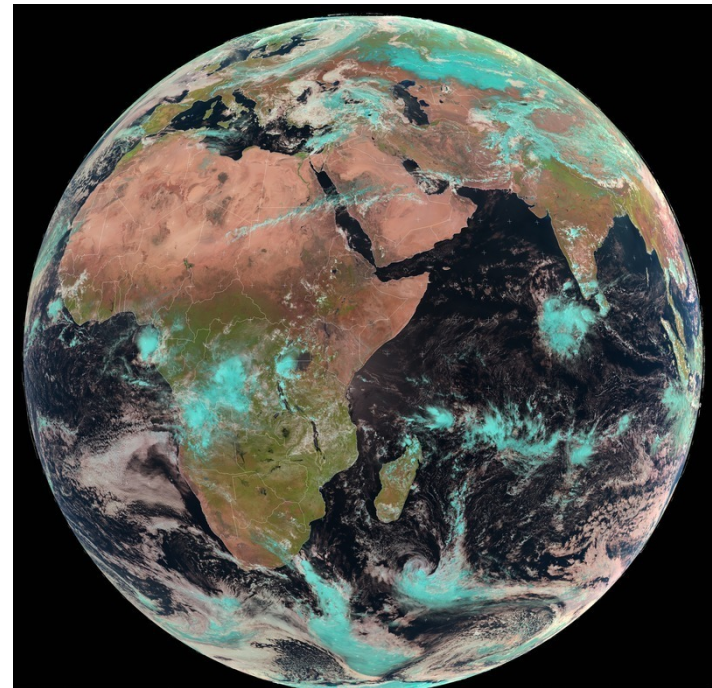


## Met-8 IODC Services – Image Data



View from 41.5 deg

- Full Earth scan - 12 channels/15 Minutes
- Scan Coverage:  $\sim 40^{\circ}$ West to  $\sim 120^{\circ}$ East
- HRV Scan pattern: upper/lower window shift



© EUMETSAT

Meteosat IODC Natural Colour, 2017-03-15 10:00:00 UTC



# NOAA

## OFFICE OF SATELLITE AND PRODUCT OPERATIONS

NATIONAL ENVIRONMENTAL SATELLITE, DATA, AND INFORMATION SERVICE

# EUMETSAT Proposed Meteorological Products

Product Name	Product Acronym	Number/Day	Product Name	Product Acronym	Number/Day
Active Fire Monitoring	FIR	96	Divergence	DIV	24
<i>Aerosol Over Sea</i>	<i>AES</i>	1	Global Instability Index	GII	96
Atmospheric Motion Vectors	AMV	24	<i>High Resolution Precipitation Index</i>	<i>HPI</i>	1
All-Sky Radiances	ASR	24	Multisensor Precipitation Estimate	MPE	96
Clear-Sky Radiances	CSR	24	Normalized Difference Vegetation Index	NDVI	1
Clear Sky Reflectance Map	CRM	1	Normalized Difference Vegetation Index – decadal	NDVI-D	1/10 days
<i>Climate Data Set</i>	<i>CDS</i>	96	Optimal Cloud Analysis	OCA	24
Cloud Analysis	CLA	24	Tropospheric Humidity	TH	24
Cloud Analysis Image	CLAI	8	Total Ozone	TOZ	96
Cloud Mask	CLM	96	Volcanic Ash	VOL	0
Cloud Top Height	CTH	96			96 (netCDF) (CAP-on request)

*Italic: only to Data Centre*





# NOAA

OFFICE OF SATELLITE  
AND PRODUCT OPERATIONS

NATIONAL ENVIRONMENTAL SATELLITE, DATA, AND INFORMATION SERVICE

- Current IODC Service: Meteosat-8 (MSG-Series)
- In service since Aug 28, 2002
- Primary IODC Service since Feb 1, 2017
- Imager Resolution:
  - 1 km VIS (HRV) and 2 km “channels 1-11” VIS, IR and WV
  - Image frequency – every 15 mins
- Operator: EUMETSAT
- Expected Decommission/Re-Orbit Time Frame: June 2020 (TBC)



# Met-8 IODC Data Acquisition & Processing

- Regional service is provided by EUMETCast-Europe/Africa direct broadcast – these data are encrypted.
- NOAA receives these data from
  - EUMETCast terrestrial-based multicast service (NESDIS STAR)
    - Staged on STAR FTP servers (latency is ~30 mins)
  - McIDAS Systems
    - Uses ADDE protocol; included M-8 into the global geo and arctic composites processing as well
  - Secure terrestrial point-to-point protocols (EUM MSDS → PDA)
    - Currently receiving data from EUM's ops systems
    - NOAA/NESDIS investigating the feasibility of transitioning M-8 HRIT data pulls from the STAR server to the PDA to support McIDAS image processing
      - Objective is to improve reliability and timeliness for McIDAS users (e.g. NCEP, SAB)
  - WMO GTS circuits (EUM → GTS → WSH RTH)
    - NCEP is acquiring these data from GTS to-date and storing these data in the Supercomputer BUFR tanks

Note - direct broadcast dissemination from Met-8 is **not** available due to a SSPA-C failure that required the transmitter to be disabled for power management purposes to preserve the mission.